



Ministry of Environment and
Green Development (MEGD)

Integrated Water Resources Management (IWRM) in Mongolia

D.GANBAT, Head, River Basin Management Division, MEGD, Mongolia
J.OTGONBAYAR, Officer, Water Monitoring & Management Division, MEGD

International Integrated Basin Management Workshop
25-26 February 2014, Istanbul, Republic of Turkey

General country information



Capital:

Ulaanbaatar city

Territory:

1,564,100 sq.km

Population:

2,921,287 as of 2013

Administration unit:

21 provinces

Mean annual precipitation: 250 mm

Natural zone:

Mountain, Steppe,
Forest, Desert

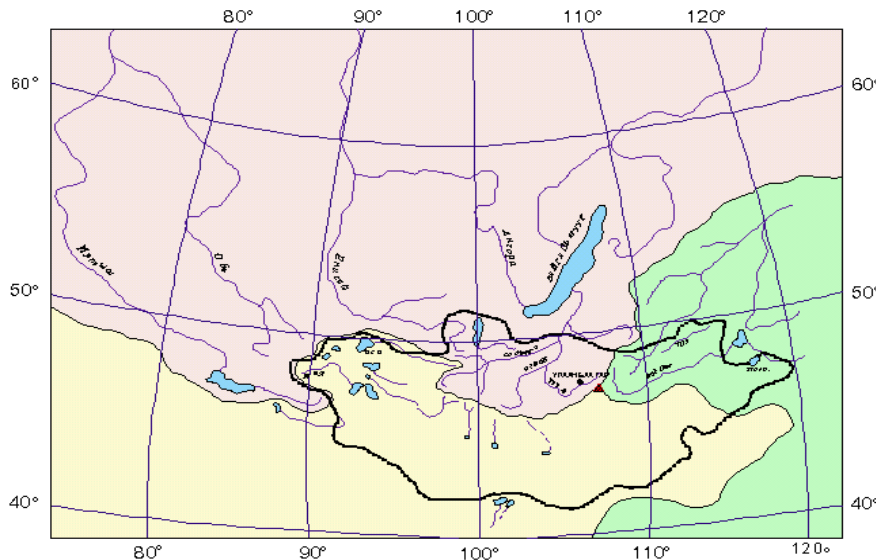
Mongolia is neighboring with the Russian Federation
and with the People's Republic of China.

Water resources in Mongolia

Total water resources are 608.29 cub.km, of which:

- Rivers 34.6 cub.km
- Lakes 500 cub.km
- Glaciers 62.9 cub.km
- Ground water 10.8 cub.km

Territory of Mongolia belongs to 3 drainage basins:



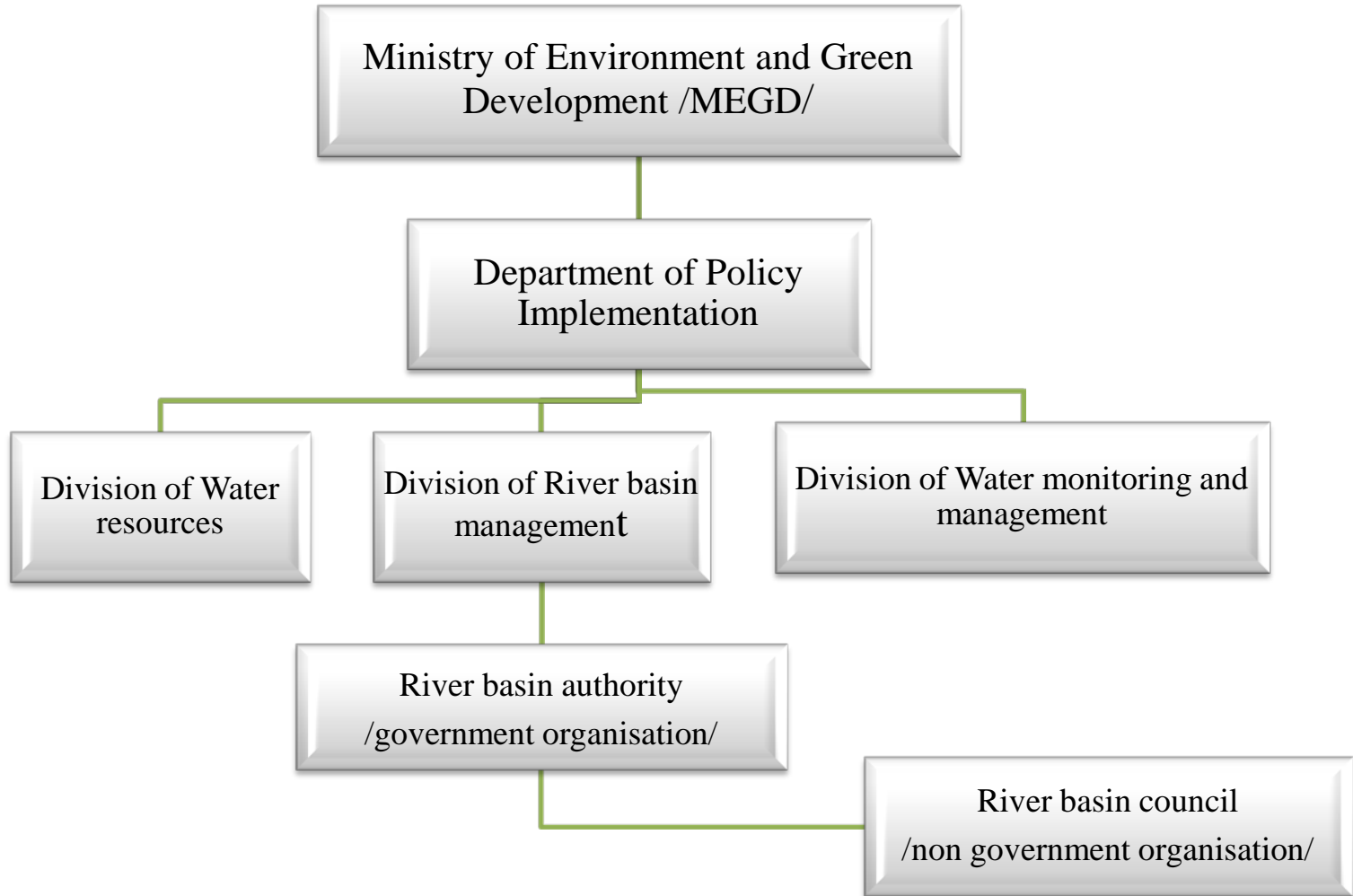
Northern Arctic ocean basin

Pacific ocean basin

Central Asian internal basin

Legal Environment for IWRM

- Mongolian Law on Water, 2012 (renewed)
- Water National Programme, Resolution 24, Parliament of Mongolia, 2010
- Setting up 29 water basins of Mongolia, Order 332, Minister of Environment & Tourism of Mongolia, 2009
- Integrated Water Resources Management national plan Resolution 389, Government of Mongolia, 2013
- Methodology for developing water resources management plan of the basin, Order 187, Minister of Environment & Green Development of Mongolia, 2013
- Rule of setting up water basin council, Order 124, Minister of Environment & Green Development of Mongolia, 2013



MEGD is responsible for providing with methodologies, management on water related issues to water basin authority.

Water basin has basin authority that is setting up on river basin level.

Main function of river basin authority

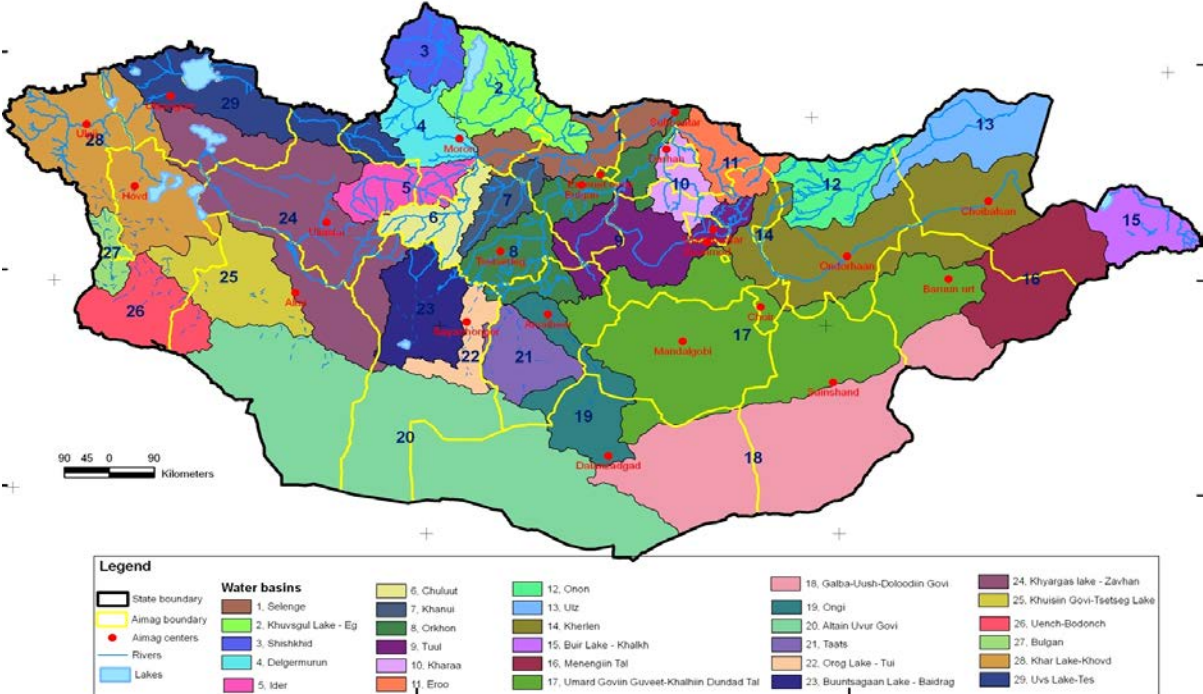
- To coordinate the implementation of basin water resources management plan
- To carry out water inventory
- To monitor water resources and utilization
- To propose the establishment of basin council to the state administrative central organisation on agreed with local administration unit

Main function of river basin council

Clause 20.1 of Mongolian law on Water states that the river basin council will be established under the water basin authority:

- to monitor and evaluate the implementation of basin water resources management plan
- to monitor the water user's duty on water restoration imposed by environmental impact assessment
- to monitor performance of a regime for special and ordinary protection and sanitary zones

In 2013 are established 25 water basin authorities out of 29 WBA's .



13 river basins water resources management plans were developed between 2010-2013.

In 2014, 8 river basins water resources management plans will be developed.

Thank you for your attention.

